

# FTSE Invesco Dynamic Multi-factor Index Series

## Overview

The FTSE Invesco Dynamic Multi-factor Index Series uses a rules-based framework to target exposure to low volatility, momentum, quality, size and value factors. Invesco Funds use economic and market sentiment indicators to identify four regimes corresponding to different parts of the business cycle: Recovery, Expansion, slowdown and Contraction. The FTSE Invesco Dynamic Multi-factor Index Series will emphasize exposure to these factors by allocating to one of four predetermined multi-factor indexes, according to the Invesco economic regime signal ('Signal'). These multi-factor indexes target a combination of factors that have historically outperformed other factors in these stages of the business cycle.

## Invesco Economic Regimes



## FTSE Russell Factors



## Features

- The FTSE Invesco Dynamic Multi-factor Index Series diversifies across equity risk premia factors according to the economic environment and overall financial market conditions. The Invesco proprietary economic regime model generates a 'Signal' that identifies which predetermined multi-factor index will be tracked.
- Utilizing FTSE Russell's innovative 'Tilt-Tilt' multi-factor methodology, the underlying regime-driven multi-factor indexes achieve greater factor exposure in a more controlled manner, while balancing concerns around diversification, liquidity and capacity.
- The FTSE Invesco Dynamic Multi-factor Indexes are reviewed monthly according to the Invesco economic regime model and the underlying multi-factor indexes are reviewed semi-annually in June and December.

### Available Indexes:

Russell 1000® Invesco Dynamic Multi-factor Index  
Russell 2000® Invesco Dynamic Multi-factor Index

## The factors

A factor is a stock characteristic that is important in explaining a security's risk and return. The FTSE Invesco Dynamic Multi-factor Index Series includes four underlying multi-factor equity indexes which have been designed to target a combination of factors that have historically outperformed other factors in certain parts of the business cycle. FTSE Russell's factors represent common factor characteristics and are supported by a body of academic research and empirical evidence across different geographies and time periods.

### Not all factors are equal

- The returns accruing to different equity risk premia factors vary according to the economic cycle and market environment. Some factors are uncorrelated, which means they may perform differently in different parts of the cycle. Therefore, combining factors offers the potential benefit of diversification.
- Factor-based investing is premised on the ability to identify factors that are expected to earn a premium (i.e. excess return over the market capitalization benchmark) over the long term.

## Factor premia and definitions

Factor	Description	Definition	Factor Cyclicity
<b>Value</b>	<p><b>The Value Premium:</b> Stocks that appear undervalued tend to perform better than stocks that appear overvalued.</p> <p><b>Value tilts:</b> Can help capture exposures at a reasonable price relative to their fundamentals.</p>	Composite of cash flow yield, earnings yield and country relative sales to price ratio.	Pro-cyclical
<b>Size</b>	<p><b>The Size Premium:</b> Smaller stocks tend to demonstrate higher performance than larger stocks.</p> <p><b>Size tilts:</b> Can help capture excess returns of smaller stocks relative to their larger counterparts.</p>	Log of full market capitalization.	Pro-cyclical
<b>Quality</b>	<p><b>The Quality Premium:</b> Higher quality stocks tend to outperform lower quality stocks.</p> <p><b>Quality tilts:</b> Can help capture stocks with the ability to consistently generate strong future cash flows, while limiting exposures to stocks that are unprofitable or highly levered.</p>	Composite of profitability (ROA, change in asset turnover and accruals) and leverage.	Defensive
<b>Low Volatility</b>	<p><b>The Low Volatility Premium:</b> Stocks that exhibit low volatility tend to outperform stocks with higher volatility.</p> <p><b>Low volatility tilts:</b> Can help capture stocks with a historically lower volatility profile relative to more volatile counterparts.</p>	Standard deviation of 5 years of weekly local total returns.	Defensive
<b>Momentum</b>	<p><b>The Momentum Premium:</b> Stock performance tends to persist, either continuing to rise or fall.</p> <p><b>Momentum tilts:</b> Can help capture stocks with strong recent performance, with the expectation that this will continue to produce short term excess returns in the future.</p>	Cumulative 11 month return (12 previous months excluding most recent month).	Both – Momentum is considered a 'persistence' factor, meaning it can benefit from a continuation of past patterns of stock returns.

## Multi-factor strategies and the power of diversification

There may be room in well diversified portfolios to shift focus from industry and country diversification to factor diversification. In the same way as different asset classes have distinct risk and return characteristics, the returns accruing to different equity risk premia factors can also be seen as distinct, varying according to the economic cycle and market environment (see Figure 1). For example, the Value factor is typically considered to exhibit pro-cyclical performance, performing strongly during periods of strong economic growth and higher risk appetite. In contrast, the performance of Quality is typically counter-cyclical.

The use of multi-factor indexes has become increasingly popular as a diversification tool. Multi-factor indexes are commonly used strategically, to target long-term sources of excess returns. This compares to single factor indexes for which the payoff for exposure to any one factor is highly variable through the investment cycle.

### Calendar year performance of Russell 1000 single factor, FTSE Invesco Dynamic Multi-factor and market cap indexes.

Underlying Market Cap Index: Russell 1000. Ranked from highest index returns (top row) to lowest index returns (bottom row).

2007	2008	2009	2010	2011	2012	2013	2014	2015	2016	2017	2018	2019	2020	2021	2022
11.56%	-28.07%	41.73%	30.59%	16.10%	19.19%	45.40%	15.85%	6.13%	18.66%	28.07%	-2.01%	36.19%	26.32%	31.73%	-3.2%
9.13%	-31.10%	35.57%	27.76%	11.06%	18.82%	36.60%	14.03%	3.06%	17.37%	26.61%	-2.43%	32.19%	24.65%	30.21%	-8.7%
5.77%	-31.14%	28.43%	20.13%	8.46%	17.57%	36.38%	13.33%	2.69%	15.99%	22.83%	-2.68%	32.16%	20.96%	29.70%	-13.6%
4.50%	-32.46%	26.72%	17.34%	8.46%	16.42%	33.58%	13.24%	2.11%	13.03%	21.69%	-4.39%	31.43%	20.92%	29.28%	-16.2%
3.92%	-36.66%	24.90%	17.07%	2.28%	16.09%	33.11%	12.88%	0.92%	12.05%	20.00%	-4.78%	30.92%	16.39%	26.86%	-18.0%
3.70%	-36.74%	22.44%	16.10%	1.80%	15.45%	31.66%	12.65%	0.04%	11.56%	19.74%	-4.93%	29.78%	13.65%	26.45%	-18.2%
3.48%	-37.58%	17.85%	14.55%	1.50%	13.25%	29.61%	12.54%	-2.26%	10.71%	18.25%	-8.09%	29.03%	7.06%	25.20%	-19.1%
1.99%	-37.60%	17.02%	11.83%	-1.17%	11.84%	28.60%	11.32%	-3.34%	7.94%	15.96%	-8.34%	25.41%	0.88%	22.80%	-21.4%

■ Dynamic Multi-factor 
 ■ Size 
 ■ Volatility 
 ■ Value 
 ■ Momentum 
 ■ Yield 
 ■ Quality 
 ■ Russell 1000

\*Source: FTSE Russell. Data as of December 31, 2022. Figures are percentage index returns for each complete calendar. Past performance is no guarantee of future results. Returns shown may reflect hypothetical historical performance. Please see disclaimer page for important legal disclosures.

# The factor index construction process

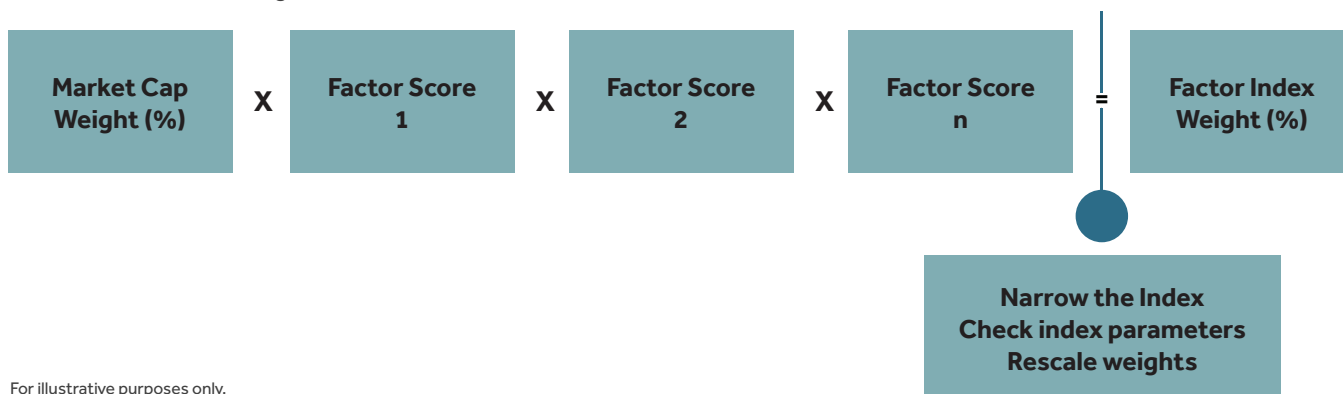
## Step 1 Calculate factor scores

Raw factor data is calculated for each index constituent. These raw data points are transformed to a series of factor 'Z-Scores\*', which standardize the units of measurement across various factors. Z-scores range from -3 to 3, with the average stock receiving a score of 0.

## Step 1 Step 2 Translate scores to factor index weights

Factor Z-Scores are mapped to a positive range of numbers between 0 and 1 using the cumulative normal distribution.

Starting weights (generally market capitalization weights) are then 'tilted' by the factor score by multiplying the market cap weight by the factor score. In multi-factor indexes, this process is repeated sequentially. The unadjusted weights which reflect the factor scores are then normalized to ensure final weights sum to 100%.

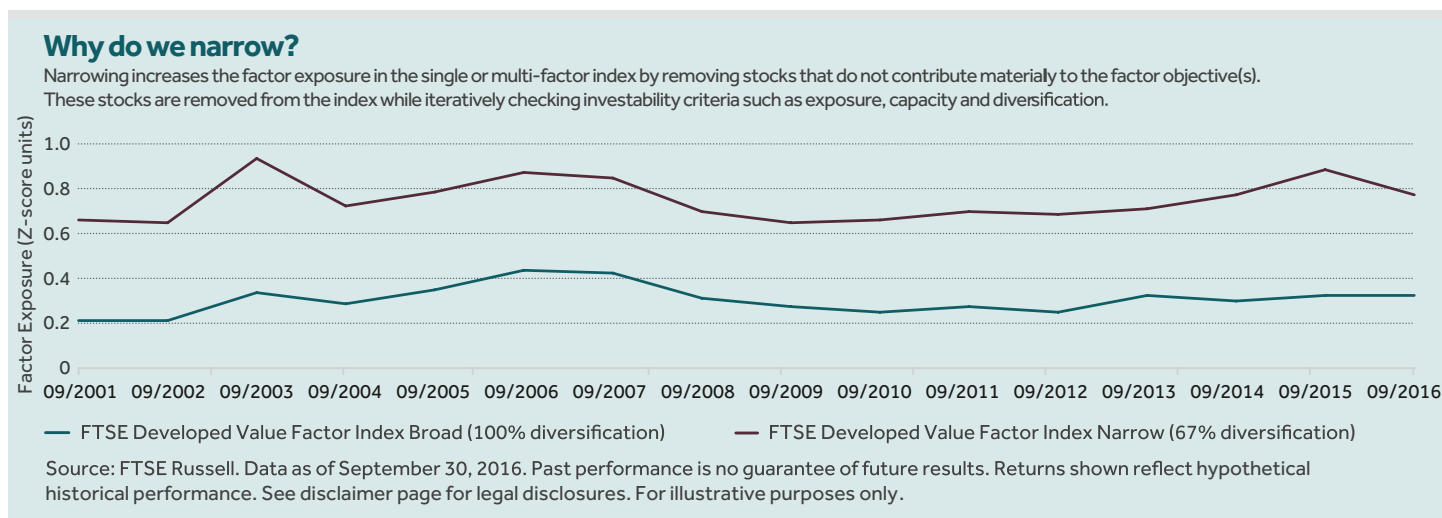


For illustrative purposes only.

## Step 1 Step 2 Step 3 Narrow the index and check index parameters

Narrowing\* involves removing stocks that do not contribute materially to the factor index objective. Stocks are removed sequentially until any of the diversification parameters are breached. These include constraints related to diversification, capacity and exposure.

The final factor index is then checked against predefined index constraints related to industry and country bands, maximum capacity and minimum stock weights.



\* A 'Z-Score' is a statistical measurement of a score's relationship to the mean in a group of scores. A Z-Score of 0 means the score is the same as the mean. A Z-Score can be positive or negative, indicating whether it is above or below the mean.

\* Not all factor indexes are narrowed. For example, those including the momentum factor are not narrowed owing to the unacceptable levels of turnover this would add to the factor index.

## The factor combination process

Gaining exposure to multiple factors becomes increasingly challenging using allocations to multiple individual single factor indexes. Targeting multiple factors can be achieved in several ways:

### Composite index ('Top down' portfolio construction)

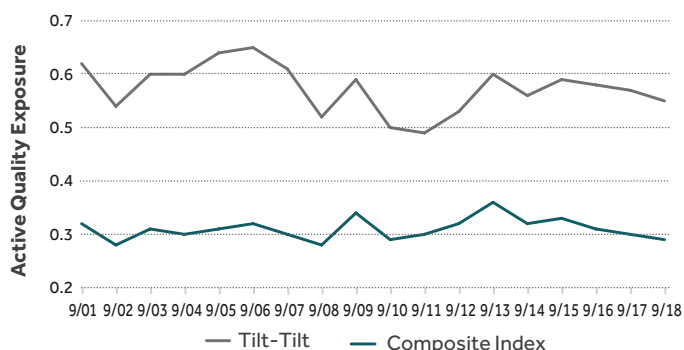
- Combine the weightings of individual factor indexes (e.g. 33.3% value, 33.3% quality, 33.3% size).
- However, at times, this may result in a dilution of exposures to the target factors, particularly if the factors combined are negatively correlated, such as Value and Quality.

### Tilt-Tilt index ('Bottom up' portfolio construction) The FTSE Russell Approach

- Sequential, or 'multiplicative' tilts on each factor.
- Targets approximately the same exposures of single factor indexes, without the dilutive effects of other methods.
- The magnitude of tilt(s) can be adjusted to address implementation concerns such as liquidity, capacity, diversification and turnover.

## Tilt-Tilt improves factor exposure for positively corrected factors

### FTSE Developed, Quality + Low Volatility Factor Index

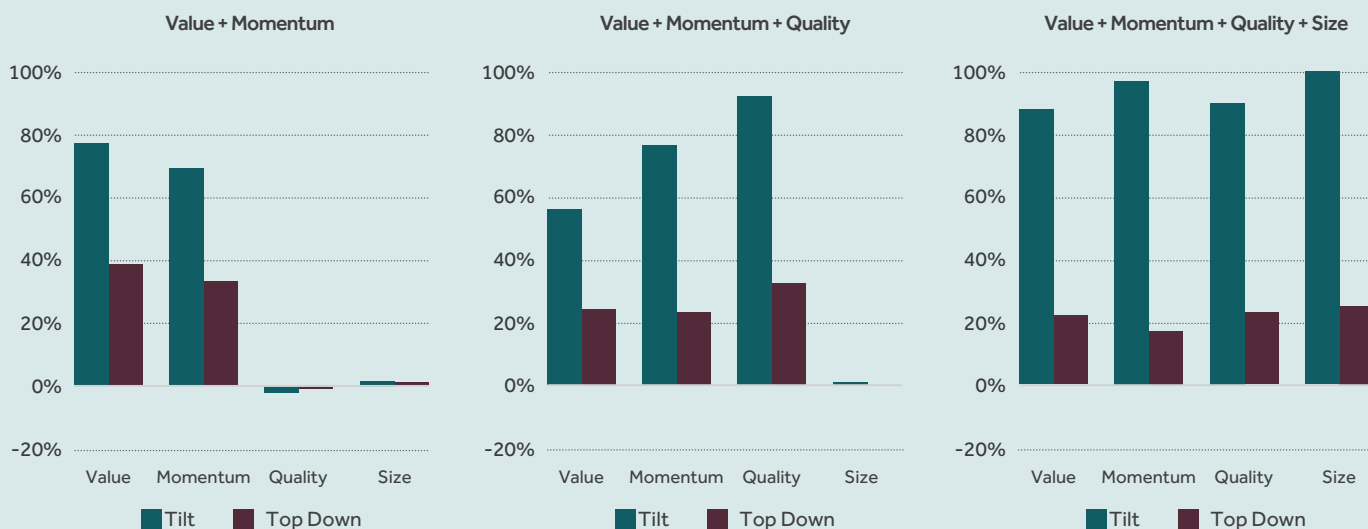


Source: FTSE Russell. Data from September 2001 to September 2018. Past performance is no guarantee of future results. Returns shown reflect hypothetical historical performance. See disclaimer page for legal disclosures. Chart shows active factor loading relative to the FTSE Developed Index, calculated using an annual rebalance frequency.

## Avoiding Factor Dilution – Tilt vs. Top Down

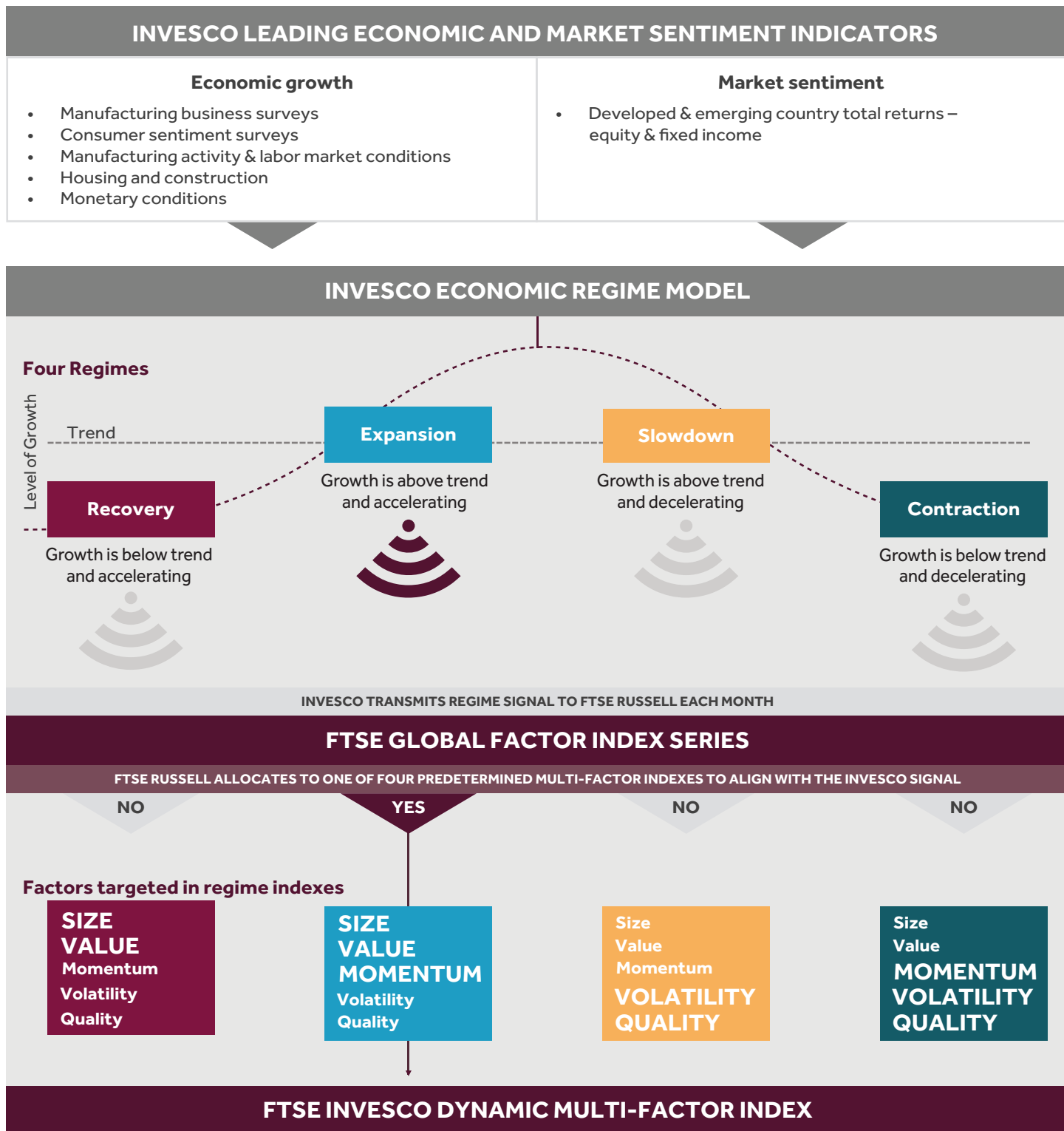
Illustration: Tilt more effectively preserved factor exposures as factors were added

Percent of Single Factor Index Active Exposure (Z-score)



Source: FTSE Russell, Analytics+. Exposures built using hypothetical Value, Momentum, Quality and Size single factor indexes, Top Down composite and Tilt indexes based on the FTSE Developed Index universe. Holdings used in the analysis are annual snapshots taken between September 2000 to September 2018. Average Active factor exposure is calculated by taking the difference between total factor exposures of the factor indexes (single, top-down composite and tilt) versus the FTSE Developed market capitalization index. Past performance is no guarantee of future results. Please see the end of the presentation for important legal disclosures. For illustrative purposes only.

## Index construction



For more information see the following methodology overviews:

FTSE Global Factor Index Series at [http://www.ftse.com/products/downloads/FTSE\\_Global\\_Factor\\_Index\\_Series\\_Methodology\\_Overview.pdf](http://www.ftse.com/products/downloads/FTSE_Global_Factor_Index_Series_Methodology_Overview.pdf)

FTSE Invesco Dynamic Multifactor Index Series at [http://www.ftse.com/products/downloads/FTSE\\_Invesco\\_Dynamic\\_Multifactor\\_Index\\_Series](http://www.ftse.com/products/downloads/FTSE_Invesco_Dynamic_Multifactor_Index_Series).

**For more information about our indexes, please visit [ftserussell.com](https://ftserussell.com).**

© 2023 London Stock Exchange Group plc and its applicable group undertakings (the "LSE Group"). The LSE Group includes (1) FTSE International Limited ("FTSE"), (2) Frank Russell Company ("Russell"), (3) FTSE Global Debt Capital Markets Inc. and FTSE Global Debt Capital Markets Limited (together, "FTSE Canada"), (4) FTSE Fixed Income Europe Limited ("FTSE FI Europe"), (5) FTSE Fixed Income LLC ("FTSE FI"), (6) The Yield Book Inc ("YB") and (7) Beyond Ratings S.A.S. ("BR"). All rights reserved.

FTSE Russell® is a trading name of FTSE, Russell, FTSE Canada, FTSE FI, FTSE FI Europe, YB and BR. "FTSE®", "Russell®", "FTSE Russell®", "FTSE4Good®", "ICB®", "The Yield Book®", "Beyond Ratings®" and all other trademarks and service marks used herein (whether registered or unregistered) are trademarks and/or service marks owned or licensed by the applicable member of the LSE Group or their respective licensors and are owned, or used under licence, by FTSE, Russell, FTSE Canada, FTSE FI, FTSE FI Europe, YB or BR. FTSE International Limited is authorised and regulated by the Financial Conduct Authority as a benchmark administrator.

All information is provided for information purposes only. All information and data contained in this publication is obtained by the LSE Group, from sources believed by it to be accurate and reliable. Because of the possibility of human and mechanical error as well as other factors, however, such information and data is provided "as is" without warranty of any kind. No member of the LSE Group nor their respective directors, officers, employees, partners or licensors make any claim, prediction, warranty or representation whatsoever, expressly or impliedly, either as to the accuracy, timeliness, completeness, merchantability of any information or of results to be obtained from the use of FTSE Russell products, including but not limited to indexes, data and analytics, or the fitness or suitability of the FTSE Russell products for any particular purpose to which they might be put. Any representation of historical data accessible through FTSE Russell products is provided for information purposes only and is not a reliable indicator of future performance.

No responsibility or liability can be accepted by any member of the LSE Group nor their respective directors, officers, employees, partners or licensors for (a) any loss or damage in whole or in part caused by, resulting from, or relating to any error (negligent or otherwise) or other circumstance involved in procuring, collecting, compiling, interpreting, analysing, editing, transcribing, transmitting, communicating or delivering any such information or data or from use of this document or links to this document or (b) any direct, indirect, special, consequential or incidental damages whatsoever, even if any member of the LSE Group is advised in advance of the possibility of such damages, resulting from the use of, or inability to use, such information.

No member of the LSE Group nor their respective directors, officers, employees, partners or licensors provide investment advice and nothing in this document should be taken as constituting financial or investment advice. No member of the LSE Group nor their respective directors, officers, employees, partners or licensors make any representation regarding the advisability of investing in any asset or whether such investment creates any legal or compliance risks for the investor. A decision to invest in any such asset should not be made in reliance on any information herein. Indexes cannot be invested in directly. Inclusion of an asset in an index is not a recommendation to buy, sell or hold that asset nor confirmation that any particular investor may lawfully buy, sell or hold the asset or an index containing the asset. The general information contained in this publication should not be acted upon without obtaining specific legal, tax, and investment advice from a licensed professional.

The information contained in this report should not be considered "research" as defined in recital 28 of the Commission Delegated Directive (EU) 2017/593 of 7 April 2016 supplementing Directive 2014/65/EU of the European Parliament and of the Council ("MiFID II") and is provided for no fee.

Past performance is no guarantee of future results. Charts and graphs are provided for illustrative purposes only. Index returns shown may not represent the results of the actual trading of investable assets. Certain returns shown may reflect back-tested performance. All performance presented prior to the index inception date is back-tested performance. Back-tested performance is not actual performance, but is hypothetical. The back-test calculations are based on the same methodology that was in effect when the index was officially launched. However, back-tested data may reflect the application of the index methodology with the benefit of hindsight, and the historic calculations of an index may change from month to month based on revisions to the underlying economic data used in the calculation of the index.

This document may contain forward-looking assessments. These are based upon a number of assumptions concerning future conditions that ultimately may prove to be inaccurate. Such forward-looking assessments are subject to risks and uncertainties and may be affected by various factors that may cause actual results to differ materially. No member of the LSE Group nor their licensors assume any duty to and do not undertake to update forward-looking assessments.

No part of this information may be reproduced, stored in a retrieval system or transmitted in any form or by any means, electronic, mechanical, photocopying, recording or otherwise, without prior written permission of the applicable member of the LSE Group. Use and distribution of the LSE Group data requires a licence from FTSE, Russell, FTSE Canada, FTSE FI, FTSE FI Europe, YB, BR and/or their respective licensors.

**About FTSE Russell**

FTSE Russell is a leading global index provider creating and managing a wide range of indexes, data and analytic solutions to meet client needs across asset classes, style and strategies. Covering 98% of the investable market, FTSE Russell indexes offer a true picture of global markets, combined with the specialist knowledge gained from developing local benchmarks around the world.

FTSE Russell index expertise and products are used extensively by institutional and retail investors globally. For over 30 years, leading asset owners, asset managers, ETF providers and investment banks have chosen FTSE Russell indexes to benchmark their investment performance and create investment funds, ETFs, structured products and index-based derivatives. FTSE Russell indexes also provide clients with tools for asset allocation, investment strategy analysis and risk management.

A core set of universal principles guides FTSE Russell index design and management: a transparent rules-based methodology is informed by independent committees of leading market participants. FTSE Russell is focused on index innovation and customer partnership applying the highest industry standards and embracing the IOSCO Principles. FTSE Russell is wholly owned by London Stock Exchange Group.

For more information, visit [ftserussell.com](https://ftserussell.com).

To learn more, visit [ftserussell.com](https://ftserussell.com); email [info@ftserussell.com](mailto:info@ftserussell.com); or call your regional Client Service Team office:

**EMEA**

+44 (0) 20 7866 1810

**North America**

+1 877 503 6437

**Asia-Pacific**

Hong Kong +852 2164 3333

Tokyo +81 3 6441 1430

Sydney +61 (0) 2 7228 5659