

FTSE UK ESG Risk-Adjusted Index Series

Integrating broad ESG risks in UK equity indices

Overview

Investors are seeking the ability to incorporate sustainable investment considerations within a broad market portfolio without significantly impacting the risk and return characteristics of that industry standard benchmark.

FTSE UK ESG Risk-Adjusted Index Series is a UK equity index family, constructed using robust screening criteria, FTSE Russell's ESG Scores, and carbon emissions and reserves data. The series provides investors with a tool to create UK equity market exposure whilst also managing key ESG risks found in the UK universe.

Benefits

The indices can be used by market participants to benchmark the performance of active ESG funds, as a replacement for core market cap weighted passive portfolios, and in the creation of ETFs, structured products and index-based derivatives.

FTSE UK ESG Risk-Adjusted Index Series Construction

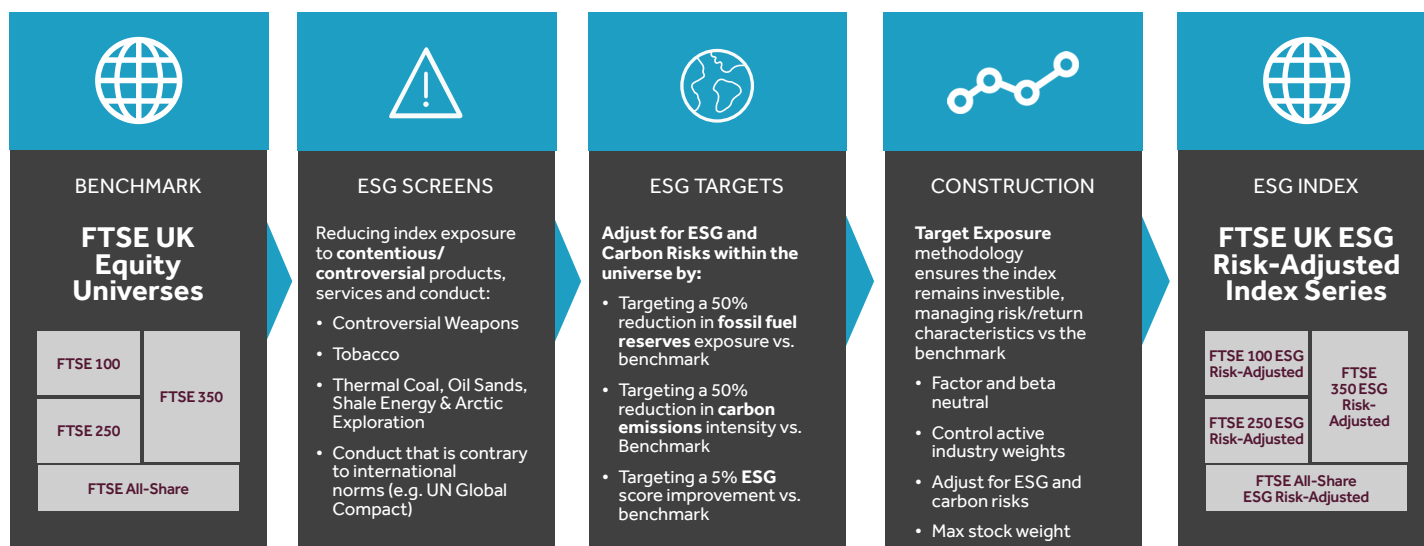


Features

- Based on the flagship FTSE UK Series Benchmarks: FTSE 100, FTSE 250, FTSE 350 and FTSE All-Share®, which captures 98% of the UK investable market capitalisation. More than \$788 billion in passive and active funds¹ track the FTSE UK Index Series
- For decades, the indices within the FTSE UK Index Series – the FTSE All-Share®, FTSE 100, FTSE 250 and other indices – have served as a measure of the UK's stock market and as a gauge of the health of the country's economy, both during periods of optimism and in moments of crisis
- Removes index exposure to specific products and services and controversial conduct
- Reduces the carbon emissions and reserves exposure by 50% vs the benchmark
- Improves the index-level ESG performance (by min. 5%) vs the benchmark
- Applies FTSE Russell's transparent target exposure methodology
- Delivers risk/return characteristics similar to the underlying benchmark index universe

¹ December 31, 2021 as reported on April 1, 2022 by eVestment for active institutional funds, Morningstar for active retail mutual funds, insurance products, and ETFs, and passive assets directly collected by FTSE Russell.

Index Construction Process



Step 1

Starting Universe

Start with the market capitalisation weighted index: FTSE 100, FTSE 250, FTSE 350 and FTSE All-Share.

Step 1

Step 2

ESG Screens

Companies involved in the following business operations are removed: Controversial Weapons, Tobacco, Thermal Coal (extraction and energy generation), Oil Sands, Shale Energy, and Arctic Exploration. Companies that potentially breach the United Nations Global Compact principles are also excluded.

Step 1

Step 2

Step 3

ESG Scores

The **ESG Risk-Adjusted indices** incorporate broad ESG and carbon risks by targeting specific improvements and reductions versus the benchmark. The indices target a 50% reduction in fossil fuel reserve exposure, 50% reduction in operational carbon emissions intensity, and a minimum of 5% ESG score improvement on the index.

Step 1

Step 2

Step 3

Step 4

Target Exposure Corrective Tilts

The Target Exposure methodology ensures that the index closely matches the risk/return of the benchmark. Factor exposures are neutralised by applying corrective tilts on common factors such as value, size, quality, low volatility, and momentum. Additionally, the Target Exposure approach allows for targeting of specific levels of ESG score improvement while controlling for active industry weights and keeping market beta close to 1. The methodology provides control over tracking error, diversification, capacity, and concentration to ensure the index remains investable.

Step 1

Step 2

Step 3

Step 4

Step 5

Publish and Review Index

The index is reviewed semi-annually in June and December.

For more information about our indexes, please visit ftserussell.com.

© 2023 London Stock Exchange Group plc and its applicable group undertakings (the "LSE Group"). The LSE Group includes (1) FTSE International Limited ("FTSE"), (2) Frank Russell Company ("Russell"), (3) FTSE Global Debt Capital Markets Inc. and FTSE Global Debt Capital Markets Limited (together, "FTSE Canada"), (4) FTSE Fixed Income Europe Limited ("FTSE FI Europe"), (5) FTSE Fixed Income LLC ("FTSE FI"), (6) The Yield Book Inc ("YB") and (7) Beyond Ratings S.A.S. ("BR"). All rights reserved.

FTSE Russell® is a trading name of FTSE, Russell, FTSE Canada, FTSE FI, FTSE FI Europe, YB and BR. "FTSE®", "Russell®", "FTSE Russell®", "FTSE4Good®", "ICB®", "The Yield Book®", "Beyond Ratings®" and all other trademarks and service marks used herein (whether registered or unregistered) are trademarks and/or service marks owned or licensed by the applicable member of the LSE Group or their respective licensors and are owned, or used under licence, by FTSE, Russell, FTSE Canada, FTSE FI, FTSE FI Europe, YB or BR. FTSE International Limited is authorised and regulated by the Financial Conduct Authority as a benchmark administrator.

All information is provided for information purposes only. All information and data contained in this publication is obtained by the LSE Group, from sources believed by it to be accurate and reliable. Because of the possibility of human and mechanical error as well as other factors, however, such information and data is provided "as is" without warranty of any kind. No member of the LSE Group nor their respective directors, officers, employees, partners or licensors make any claim, prediction, warranty or representation whatsoever, expressly or impliedly, either as to the accuracy, timeliness, completeness, merchantability of any information or of results to be obtained from the use of FTSE Russell products, including but not limited to indexes, data and analytics, or the fitness or suitability of the FTSE Russell products for any particular purpose to which they might be put. Any representation of historical data accessible through FTSE Russell products is provided for information purposes only and is not a reliable indicator of future performance.

No responsibility or liability can be accepted by any member of the LSE Group nor their respective directors, officers, employees, partners or licensors for (a) any loss or damage in whole or in part caused by, resulting from, or relating to any error (negligent or otherwise) or other circumstance involved in procuring, collecting, compiling, interpreting, analysing, editing, transcribing, transmitting, communicating or delivering any such information or data or from use of this document or links to this document or (b) any direct, indirect, special, consequential or incidental damages whatsoever, even if any member of the LSE Group is advised in advance of the possibility of such damages, resulting from the use of, or inability to use, such information.

No member of the LSE Group nor their respective directors, officers, employees, partners or licensors provide investment advice and nothing in this document should be taken as constituting financial or investment advice. No member of the LSE Group nor their respective directors, officers, employees, partners or licensors make any representation regarding the advisability of investing in any asset or whether such investment creates any legal or compliance risks for the investor. A decision to invest in any such asset should not be made in reliance on any information herein. Indexes cannot be invested in directly. Inclusion of an asset in an index is not a recommendation to buy, sell or hold that asset nor confirmation that any particular investor may lawfully buy, sell or hold the asset or an index containing the asset. The general information contained in this publication should not be acted upon without obtaining specific legal, tax, and investment advice from a licensed professional.

Past performance is no guarantee of future results. Charts and graphs are provided for illustrative purposes only. Index returns shown may not represent the results of the actual trading of investable assets. Certain returns shown may reflect back-tested performance. All performance presented prior to the index inception date is back-tested performance. Back-tested performance is not actual performance, but is hypothetical. The back-test calculations are based on the same methodology that was in effect when the index was officially launched. However, back-tested data may reflect the application of the index methodology with the benefit of hindsight, and the historic calculations of an index may change from month to month based on revisions to the underlying economic data used in the calculation of the index.

This document may contain forward-looking assessments. These are based upon a number of assumptions concerning future conditions that ultimately may prove to be inaccurate. Such forward-looking assessments are subject to risks and uncertainties and may be affected by various factors that may cause actual results to differ materially. No member of the LSE Group nor their licensors assume any duty to and do not undertake to update forward-looking assessments.

No part of this information may be reproduced, stored in a retrieval system or transmitted in any form or by any means, electronic, mechanical, photocopying, recording or otherwise, without prior written permission of the applicable member of the LSE Group. Use and distribution of the LSE Group data requires a licence from FTSE, Russell, FTSE Canada, FTSE FI, FTSE FI Europe, YB, BR and/or their respective licensors.

About FTSE Russell

FTSE Russell is a leading global index provider creating and managing a wide range of indexes, data and analytic solutions to meet client needs across asset classes, style and strategies. Covering 98% of the investable market, FTSE Russell indexes offer a true picture of global markets, combined with the specialist knowledge gained from developing local benchmarks around the world.

FTSE Russell index expertise and products are used extensively by institutional and retail investors globally. For over 30 years, leading asset owners, asset managers, ETF providers and investment banks have chosen FTSE Russell indexes to benchmark their investment performance and create investment funds, ETFs, structured products and index-based derivatives. FTSE Russell indexes also provide clients with tools for asset allocation, investment strategy analysis and risk management.

A core set of universal principles guides FTSE Russell index design and management: a transparent rules-based methodology is informed by independent committees of leading market participants. FTSE Russell is focused on index innovation and customer partnership applying the highest industry standards and embracing the IOSCO Principles. FTSE Russell is wholly owned by London Stock Exchange Group.

For more information, visit ftserussell.com.

To learn more, visit ftserussell.com; email info@ftserussell.com; or call your regional Client Service Team office:

EMEA

+44 (0) 20 7866 1810

North America

+1 877 503 6437

Asia-Pacific

Hong Kong +852 2164 3333
Tokyo +81 3 6441 1430
Sydney +61 (0)2 7228 5659